

Arbor Animal News

A Quarterly publication from Arbor Animal Clinic

April 15, 2011

February is (was) Dental Month (...and how?)

Thank you to all of our wonderful clients who participated in February's National Dental Month! It was another grand success with so many clients wanting to participate that we extended it into March. Many of our clients are now having their pet's teeth cleaned annually, preventing tooth loss and illness. Bravo! ...and don't forget the home dental care.

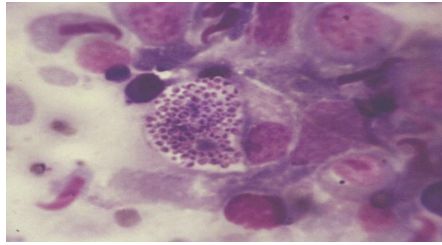
Spring Has Sprung

Spring is here and that means picnics, barbecues and gardening. Remember, there are many foods that are perfectly safe for people but not for dogs and cats. Here is a list of foods that are potentially toxic to pets:

- Alcoholic Beverages
- Avocado
- Onions (cooked and raw)
- Chocolate (all forms)
- Coffee (all forms)
- Macadamia nuts
- Raisins and grapes
- Salt, garlic, yeast dough
- Products sweetened with xylitol (such as sugar-free gum)

Also, there are 444 plants listed as toxic to pets. A partial list includes:

- Lilies, English Ivy, American Holly
- Fruit trees—stems, leaves, seeds
- Gladiola, Coleus, Rhododendron
- Sago Palm (very toxic)
- Oleander (very toxic)
- Hosta, Clematis, Yucca



Doctor's Corner:

Histoplasmosis

Histoplasmosis is an internal systemic fungal infection caused by the organism *Histoplasma Capsulatum*. It is only occasionally seen in dogs and cats in Austin, but we have seen an increase in the number of cases in our area in the last year or two.

It is an airborne infection caused by breathing in the spores found in soil contaminated by the droppings of birds or bats. The fungus can also grow in organically enriched soil. The disease is very serious and can affect many different organs and parts of the body. A lung form is most common in cats and an intestinal form is the most common in dogs.

The clinical signs of Histoplasmosis may be nonspecific and may begin as fever, weight loss, poor appetite or include diarrhea or respiratory distress. We may suspect the disease based on clinical signs, Xrays, or other tests, but generally we confirm the diagnosis by seeing the organism under the microscope.

Treatment for the disease involves giving anti-fungal medications for a minimum of 4-6 months so it requires a lot of time and dedication by an owner to successfully treat this life-threatening disease. The prognosis for recovery is generally pretty good if it is caught early and the damage is not too extensive when we start treatment. Humans can also contract Histoplasmosis and may have been in contact with the same soil which exposed their pet. Dogs and cats do not transmit the disease to humans or other animals.

Dr. Faught recently diagnosed a case of Histoplasmosis in a cat presented for not feeling well and poor appetite. He also had some labored breathing. This sweet cat is named "Carlton" and is doing better with treatment. We are all hoping for his full recovery!!!!!!

Do you know Our Staff?

Laurie Dulaney, D.V.M.

John Faught, D.V.M.

Rebecca Davies, D.V.M.

Mark Hartwell, D.V.M. Medical Director

Hospital Manager: Nancee Swanson

Receptionists: Sarah Roberson, Head Receptionist, Susan Lowe, Kate Powell, Jenn Mitchell, Deborah Smith

Surgery Technicians: Jason Hayes, Head Surgery Tech, Stormy Shipman, Kimberly Bundrick

Technicians: Jennifer DeVore, Chris Malish, Gayleen Mayerle, Jody Adams, Valerie Velasquez

Animal Caretakers: Joseph Blackmon, JT Thompson

We are all here to serve you and take care of your dogs and cats as if they were our own precious pets!

Did You Know?

→ In 2010, the most popular name for dogs (and second most popular in cats, behind Max) was Bella? The name likely comes from the popular book and movie series "Twilight".

→ Some of the most unusual names listed for cats were: Purr Diem and Bing Clawsby, while the list for dogs included: Pickle Von Corndog, Badonkadonk, and Dog Vader.

→ A cat can run at speeds up to just over 30 miles an hour?

→ 95% of cat owners admit they talk to their cats? Personally, I think the other 5% are fibbing!

Stay in Touch

Follow us on Facebook.....

...and don't forget to start your own Pet Portal by going to the link on our website. It is free and easy to do and a great resource.



Pet Portal

LOG IN

Manage your pets health online

www.arboranimalclinic.com